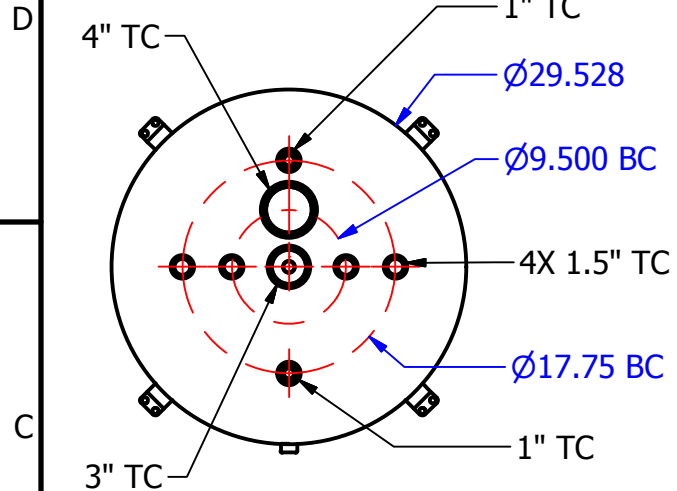
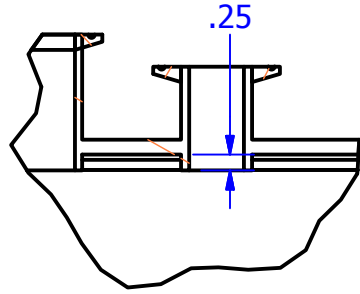


THIS DOCUMENT IS FOR REFERENCE ONLY AND IS PROPRIETARY INFORMATION BELONGING TO INTERNATIONAL FILTER PRODUCTS UNAUTHORIZED COPIES OR USE FOR OTHER PURPOSES STRICTLY PROHIBITED.

REVISIONS				
ZONE	REV	DESCRIPTION	DATE	APPROVED
	1	Sales Drawing	8/18/2014	CD Morland



APPROVAL
 Signed By: _____
 Date: _____

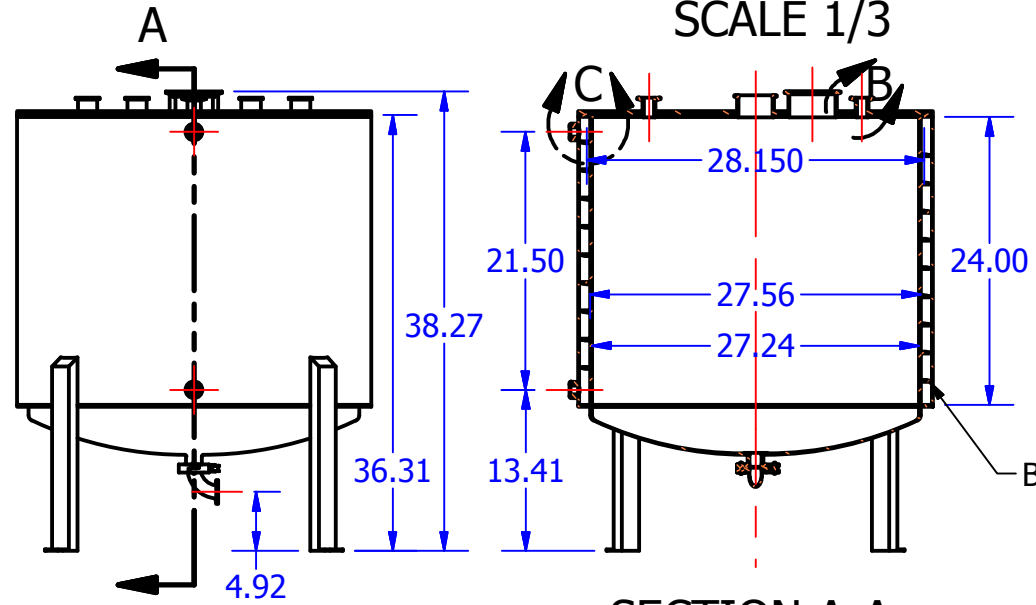


DETAIL B
SCALE 1/3

- NOTES:**
- 1.0 MATERIAL: WETTED SURFACES ARE 316 SS PER ASME BPE, ALL OTHERS ARE 304 SS EXCEPT HASTELLOY FERRULES.
 - 2.0 ALL WETTED SURFACES ARE PFA LINED
 - 3.0 THE DRAIN PORT IS A 1.0" TC CONNECTION.
 - 4.0 THE PROCESS VESSEL MUST BE JACKETED ON THE OUTSIDE, JACKET MATERIAL IS 304.
 - 5.0 INTERNAL WETTED SURFACES ARE 16 RA FINISH; EXTERNAL EXPOSED SURFACES ARE 25 RA FINISHED.
 - 6.0 ALL SURFACES ARE TO BE ELECTRO-POLISHED.
 - 7.0 DESIGNED TO ACCEPT VITON GASKET.
 - 8.0 THE DESIGN PRESSURE OF THE JACKET IS 100 PSI, 220 F.
 - 9.0 JACKET HAS BAFFLES TO ENSURE FLUID CIRCULATES EVENLY AROUND THE PROCESS FLUID VESSEL.
 - 10.0 THE JACKET FLUID IS GLYCOL/ WATER MIX, INLET/OUTLET, ARE 0.75" NPT (FEMALE).
 - 11.0 FOUR LEGS ARE FOR SUPPORT.
 - 12.0 THE VESSEL IS DESIGNED TO BE STEAM STERILIZED AT 126 C FOR 60 MINUTES.
 - 13.0 FERRULES ON LID MUST EXTEND 0.25" BELOW LID SURFACE
 - 14.0 FERRULES ARE HASTELLOY C22 (SUPPLIED BY CUSTOMER)



DETAIL C
SCALE 1 / 7



SECTION A-A
SCALE 1/16

DRAWN J Toghia	2/12/2015	International Filter Products 904 N. FREDERIC ST. BURBANK, CA 91505 PHONE: 818-841-2702 FAX: 818-841-2947 email: cdmorland@sbcglobal.net	TITLE	200L Jacketed Tank C3		
CHECKED CD Morland	2/12/2015		SIZE	ISOF NO	DWG NO	REV
APPROVED CD Morland	2/12/2015		A		01- 1800- 200L- C31	1
UNLESS OTHERWISE SPECIFIED DIMENSIONS ARE IN INCHES DECIMALS FRACTIONS +/- 1/16 X +/- .030 ANGLES +/- 1/2 XX +/- .015 SURFACE ROUGHNESS 125 XXX +/- .005 CONCENTRICITIES .010 (FIM) INTERNAL RADII .015~.030 BREAK CORNERS .005~.015		SCALE	NA	WEIGHT	SHEET 1 OF 1	