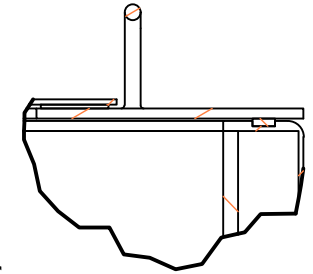
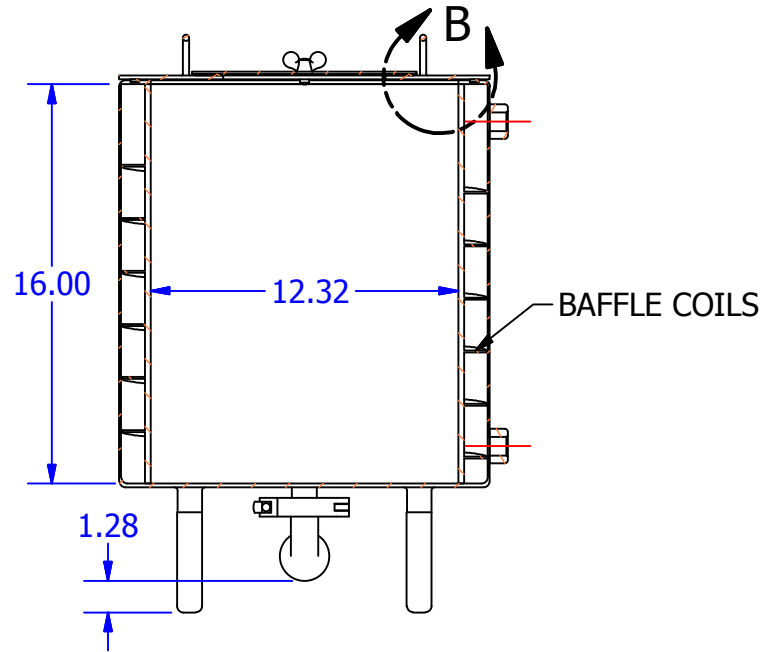
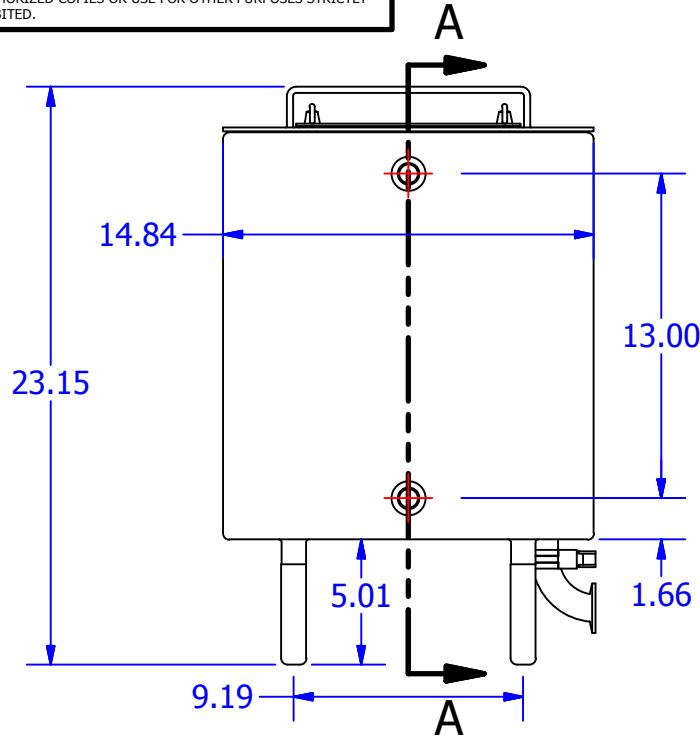


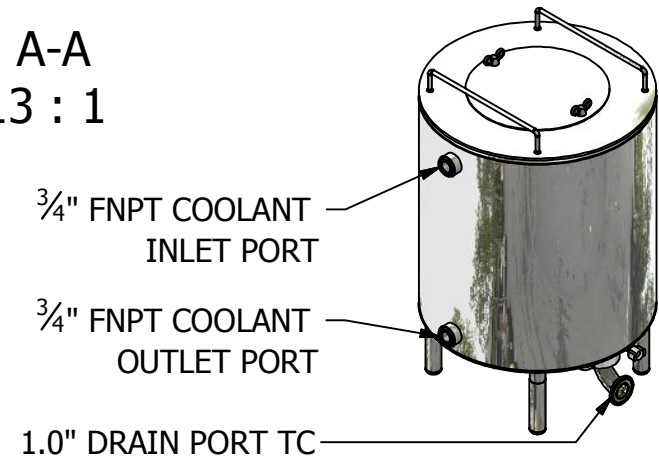
THIS DOCUMENT IS FOR REFERENCE ONLY AND IS PROPRIETARY INFORMATION BELONGING TO INTERNATIONAL FILTER PRODUCTS UNAUTHORIZED COPIES OR USE FOR OTHER PURPOSES STRICTLY PROHIBITED.

REVISIONS				
ZONE	REV	DESCRIPTION	DATE	APPROVED
	1	Sales Drawing	6/17/2014	CD Morland



DETAIL B
SCALE 1/3

SECTION A-A
SCALE 0.13 : 1



NOTES:

- 1.0 MATERIAL: WETTED SURFACES ARE 316 SS PER ASME BPE, ALL OTHERS ARE 304 SS.
- 2.0 THE DRAIN PORT IS A 1.0" TC CONNECTION.
- 3.0 THE PROCESS VESSEL MUST BE JACKETED ON THE OUTSIDE, JACKET MATERIAL IS 304.
- 4.0 INTERNAL WETTED SURFACES ARE < 11 RA FINISH; EXTERNAL EXPOSED SURFACES ARE < 20 RA FINISHED.
- 5.0 ALL SURFACES ARE TO BE ELECTRO-POLISHED.
- 6.0 DESIGNED TO ACCEPT SILICON GASKET.
- 7.0 THE DESIGN PRESSURE OF THE JACKET IS 100 PSI, 32 F.
- 8.0 JACKET HAS BAFFLES TO ENSURE FLUID CIRCULATES EVENLY AROUND THE PROCESS FLUID VESSEL.
- 9.0 THE JACKET FLUID IS REFRIGERATION COOLANT, INLET/OUTLET, ARE 0.75" NPT (FEMALE).
- 10.0 FOUR LEGS ARE FOR SUPPORT.
- 11.0 THE VESSEL IS DESIGNED TO BE STEAM STERILIZED AT 126 C FOR 60 MINUTES.

DRAWN J TOGHIA	6/17/2014
CHECKED CD MORLAND	6/17/2014
APPROVED CD MORLAND	6/17/2014

International Filter Products
904 N. FREDERIC ST. BURBANK, CA 91505
PHONE: 818-841-2702
FAX: 818-841-2947
email: cdmorland@sbcglobal.net

UNLESS OTHERWISE SPECIFIED
DIMENSIONS ARE IN INCHES
DECIMALS FRACTIONS +/- 1/16
X +/- .030 ANGLES +/- 1/2
XX +/- .015 SURFACE ROUGHNESS 125
XXX +/- .005
CONCENTRICITIES .010 (FIM)
INTERNAL RADII .015~.030
BREAK CORNERS .005~.015

TITLE 25L Jacketed Tank B			
SIZE A	ISOF NO	DWG NO 01-01790-25L-B	REV 1
SCALE NA	WEIGHT	SHEET 1 OF 1	