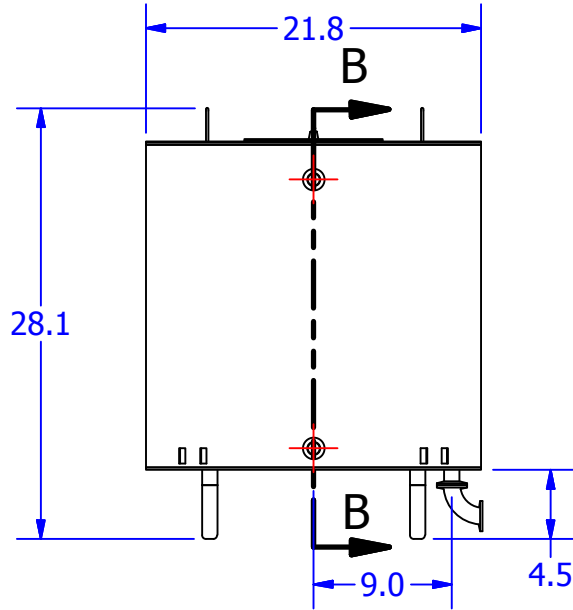
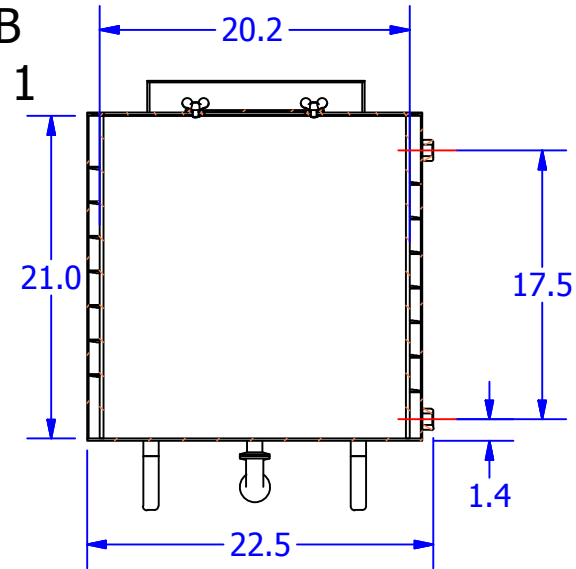


THIS DOCUMENT IS FOR REFERENCE ONLY AND IS PROPRIETARY INFORMATION BELONGING TO INTERNATIONAL FILTER PRODUCTS UNAUTHORIZED COPIES OR USE FOR OTHER PURPOSES STRICTLY PROHIBITED.

REVISIONS				
ZONE	REV	DESCRIPTION	DATE	APPROVED
	1	PRODUCTION RELEASE	9/3/2013	CD Morland

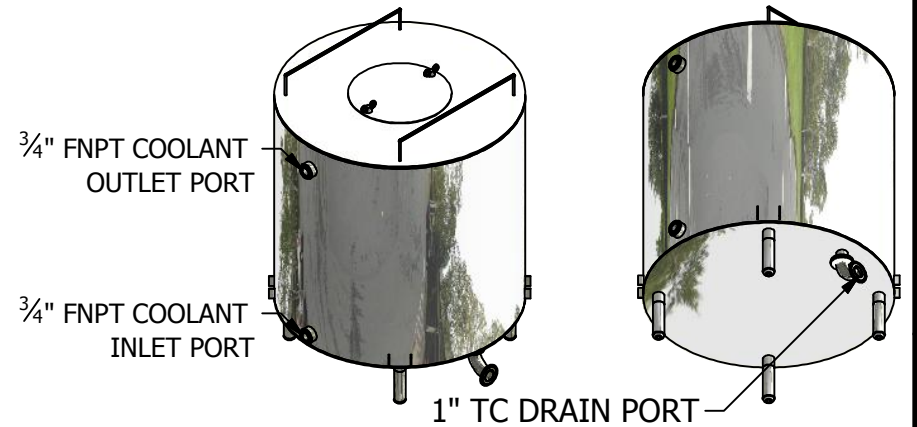


SECTION B-B
SCALE 0.08 : 1



NOTES:

- 1.0 MATERIAL IS 304 SS AS PER ASME BPE.
- 2.0 THE DRAIN PORT IS A 1.0" TC CONNECTION.
- 3.0 THE PROCESS VESSEL MUST BE JACKETED ON THE OUTSIDE, JACKET MATERIAL IS 304.
- 4.0 INTERNAL WETTED SURFACES ARE 16 RA FINISH; EXTERNAL EXPOSED SURFACES ARE 25 RA FINISHED.
- 5.0 ALL SURFACES ARE TO BE ELECTRO-POLISHED.
- 6.0 DESIGNED TO ACCEPT SILICON GASKET.
- 7.0 THE DESIGN PRESSURE OF THE JACKET IS 100 PSI, 32 F.
- 8.0 JACKET HAS BAFFLES TO ENSURE FLUID CIRCULATES EVENLY AROUND THE PROCESS FLUID VESSEL.
- 9.0 THE JACKET FLUID IS REFRIGERATION COOLANT, INLET/OUTLET, ARE 0.75" NPT (FEMALE).
- 10.0 FOUR LEGS ARE WELDED FOR SUPPORT.
- 11.0 THE VESSEL IS DESIGNED TO BE STEAM STERILIZED AT 126 C FOR 60 MINUTES.



DRAWN YA Zanki	9/3/2013	International Filter Products	
CHECKED CD Morland	9/3/2013	904 N. FREDERIC ST. BURBANK, CA 91505	PHONE: 818-841-2702 FAX: 818-841-2947 email: cdmorland@sbcglobal.net
APPROVED CD Morland	9/3/2013	TITLE 100L Jacketed Tank -B	
UNLESS OTHERWISE SPECIFIED DIMENSIONS ARE IN INCHES		SIZE A	ISOF NO
DECIMALS X +/- .030	FRACTIONS +/- 1/16	DWG NO 01-1800-100L-B	REV 1
XX +/- .015	ANGLES +/- 1/2	SCALE NA	WEIGHT
XXX +/- .005	SURFACE ROUGHNESS 125	SHEET 1 OF 1	
CONCENTRICITIES .010 (FIM) INTERNAL RADII .015~.030 BREAK CORNERS .005~.015			