

4

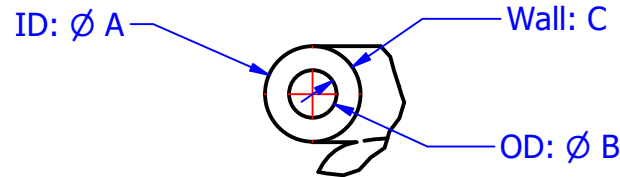
3

2

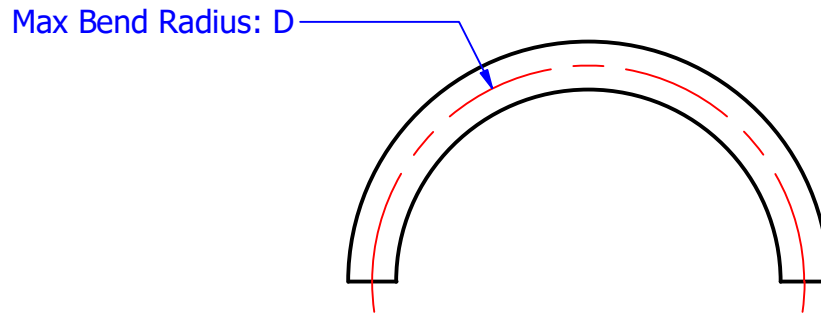
1

THIS DOCUMENT IS FOR REFERENCE ONLY AND IS PROPRIETARY INFORMATION BELONGING TO INTERNATIONAL FILTER PRODUCTS UNAUTHORIZED COPIES OR USE FOR OTHER PURPOSES STRICTLY PROHIBITED.

REVISIONS				
ZONE	REV	DESCRIPTION	DATE	APPROVED
	-	Sales Drawing	05/11/2026	CD Morland



DETAIL A  
SCALE 1



NOTES:

- 1.0 MATERIAL: PLATINUM CURED SILICONE
- 2.0 CLEAN ROOM DOUBLE BAGGED.
- 3.0 STERILIZABLE BY GAMMA IRRADIATION, ETO AND AUTOCLAVE.
- 4.0 STANDARD COIL IS 25 FT UNLESS OTHERWISE SPECIFIED
- 5.0 DUROMETER (SHORE A) VALUE IS 60 NOMINAL
- 6.0 TENSILE STRENGTH IS >900 PSI (>6.2 MPA)
- 7.0 ELONGATION IS >300%

DRAWN AG LABBAD 5/11/2026 CHECKED EA Flores 5/11/2026 APPROVED CD Morland 5/11/2026	<b>International Filter Products</b> 7914 AJAY DRIVE Sun Valley, CA 91352 PHONE: 818-504-8115 email: sales@internationalfilterproducts.com		
UNLESS OTHERWISE SPECIFIED DIMENSIONS ARE IN INCHES DECIMALS    FRACTIONS +/- 1/16 X +/- .030    ANGLES +/- 1/2 XX +/- .015    SURFACE ROUGHNESS 125 ✓ XXX +/- .005 CONCENTRICITIES .010 (FIM) INTERNAL RADII .015~.030 BREAK CORNERS .005~.015		TITLE <b>Tube, X" ID x X" OD, Platinum Cured Silicone</b>	
SIZE <b>A</b>	ISOF NO NA	DWG NO <b>SPT60L-XXX-X</b>	REV -
SCALE NA	WEIGHT N/A	SHEET <b>1</b> OF <b>3</b>	

4

3

2

1

A

A

4

3

2

1

THIS DOCUMENT IS FOR REFERENCE ONLY AND IS PROPRIETARY INFORMATION BELONGING TO INTERNATIONAL FILTER PRODUCTS. UNAUTHORIZED COPIES OR USE FOR OTHER PURPOSES STRICTLY PROHIBITED.

## REVISIONS

ZONE	REV	DESCRIPTION	DATE	APPROVED
	-	Sales Drawing	05/11/2026	CD Morland

D

D

Part Number	Dimension A [in (mm)]	Dimension B [in (mm)]	Dimension C [in (mm)]	Dimension D [in (mm)]	Burst Pressure (psi)	Burst Pressure (bar)
SPT60L-020-2	0.020 (0.5)	0.146 (3.7)	0.063 (1.6)	0.080 (2.0)	199	13.7
SPT60L-031-1	0.031 (0.8)	0.094 (2.4)	0.031 (0.8)	0.125 (3.2)	138*	9.5
SPT60L-031-2	0.031 (0.8)	0.156 (4.0)	0.063 (1.6)	0.125 (3.2)	160	11.1
SPT60L-047-157	0.047 (1.2)	0.157 (4.0)	0.055 (1.4)	0.188 (4.8)	168	11.6
SPT60L-047-2	0.047 (1.2)	0.172 (4.4)	0.063 (1.6)	0.188 (4.8)	174	12.0
SPT60L-063-1	0.063 (1.6)	0.125 (3.2)	0.031 (0.8)	0.250 (6.4)	113	7.8
SPT60L-063-157	0.063 (1.6)	0.157 (4.0)	0.047 (1.2)	0.250 (6.4)	142	9.8
SPT60L-063-2	0.063 (1.6)	0.188 (4.8)	0.063 (1.6)	0.250 (6.4)	167*	11.5
SPT60L-079-204	0.078 (2.0)	0.204 (5.2)	0.063 (1.6)	0.316 (8.0)	145	10.0
SPT60L-094-2	0.094 (2.4)	0.219 (5.6)	0.063 (1.6)	0.375 (9.5)	134	9.2
SPT60L-125-1	0.125 (3.2)	0.188 (4.8)	0.031 (0.8)	0.500 (12.7)	67	4.6
SPT60L-125-2	0.125 (3.2)	0.250 (6.4)	0.063 (1.6)	0.500 (12.7)	113	7.8
SPT60L-125-268	0.125 (3.2)	0.268 (6.8)	0.072 (1.8)	0.500 (12.7)	123	8.4
SPT60L-157-315	0.157 (4.0)	0.315 (8.0)	0.079 (2.0)	0.630 (16.0)	113	7.8
SPT60L-187-1	0.188 (4.8)	0.250 (6.4)	0.031 (0.8)	0.750 (19.1)	46	3.1
SPT60L-187-2	0.188 (4.8)	0.313 (7.9)	0.063 (1.6)	0.750 (19.1)	85	5.9
SPT60L-187-346	0.187 (4.7)	0.346 (8.8)	0.080 (2.0)	0.750 (19.1)	101	7.0
SPT60L-187-3	0.188 (4.8)	0.375 (9.5)	0.094 (2.4)	0.750 (19.1)	113	7.8
SPT60L-187-4	0.188 (4.8)	0.438 (11.1)	0.125 (3.2)	0.750 (19.1)	134	9.2

C

C

B

B

A

A

## NOTES:

- PLEASE CONTACT IFP FOR AVAILABILITY
- BURST PRESSURE MEASUREMENT IS USING ASTM D1599.

DRAWN AG LABBAD	5/11/2026
CHECKED EA Flores	5/11/2026
APPROVED CD Morland	5/11/2026

## International Filter Products

7914 AJAY DRIVE  
Sun Valley, CA 91352  
PHONE: 818-504-8115  
FAX: 818-841-2947  
email: sales@internationalfilterproducts.com

UNLESS OTHERWISE SPECIFIED  
DIMENSIONS ARE IN INCHES

DECIMALS FRACTIONS +/- 1/16  
X +/- .030 ANGLES +/- 1/2  
XX +/- .015 SURFACE ROUGHNESS 125  
XXX +/- .005

CONCENTRICITIES .010 (FIM)  
INTERNAL RADII .015~.030  
BREAK CORNERS .005~.015

TITLE			
Tube, X" ID x X" OD, Platinum Cured Silicone			
SIZE A	ISOF NO	DWG NO SPT60L-XXX-X	REV -
SCALE NA	WEIGHT	SHEET 2 OF 3	

4

3

2

1

4

3

2

1

THIS DOCUMENT IS FOR REFERENCE ONLY AND IS PROPRIETARY INFORMATION BELONGING TO INTERNATIONAL FILTER PRODUCTS. UNAUTHORIZED COPIES OR USE FOR OTHER PURPOSES STRICTLY PROHIBITED.

## REVISIONS

ZONE	REV	DESCRIPTION	DATE	APPROVED
	-	Sales Drawing	05/11/2026	CD Morland

D

D

Part Number	Dimension A [in (mm)]	Dimension B [in (mm)]	Dimension C [in (mm)]	Dimension D [in (mm)]	Burst Pressure (psi)	Burst Pressure (bar)
SPT60L-197-4	0.197 (5.0)	0.472 (12.0)	0.138 (3.5)	0.788 (20.0)	137	9.4
SPT60L-236-394	0.236 (6.0)	0.394 (10.0)	0.079 (2.0)	0.944 (24.0)	85	5.8
SPT60L-250-1	0.250 (6.4)	0.313 (7.9)	0.031 (0.8)	1.000 (25.4)	34	2.3
SPT60L-250-2	0.250 (6.4)	0.375 (9.5)	0.063 (1.6)	1.000 (25.4)	64*	4.4
SPT60L-250-3	0.250 (6.4)	0.438 (11.1)	0.094 (2.4)	1.000 (25.4)	167*	11.5
SPT60L-250-4	0.250 (6.4)	0.500 (12.7)	0.125 (3.2)	1.000 (25.4)	115*	7.9
SPT60L-313-2	0.313 (7.9)	0.438 (11.1)	0.063 (1.6)	1.250 (31.8)	54	3.7
SPT60L-313-3	0.313 (7.9)	0.500 (12.7)	0.094 (2.4)	1.250 (31.8)	78	5.4
SPT60L-315-472	0.315 (8.0)	0.472 (12.0)	0.079 (2.0)	1.260 (32.0)	66	4.6
SPT60L-315-488	0.315 (8.0)	0.488 (12.4)	0.088 (2.2)	1.260 (32.0)	73	5.0
SPT60L-375-2	0.375 (9.5)	0.500 (12.7)	0.063 (1.6)	1.500 (38.1)	50*	3.4
SPT60L-375-3	0.375 (9.5)	0.563 (14.3)	0.094 (2.4)	1.500 (38.1)	69*	4.8
SPT60L-375-4	0.375 (9.5)	0.625 (15.9)	0.125 (3.2)	1.500 (38.1)	84	5.8
SPT60L-438-3	0.438 (11.1)	0.625 (15.9)	0.094 (2.4)	1.750 (44.5)	57	4.0
SPT60L-500-2	0.500 (12.7)	0.625 (15.9)	0.063 (1.6)	2.000 (50.8)	33*	2.3
SPT60L-500-4	0.500 (12.7)	0.750 (19.1)	0.125 (3.2)	2.000 (50.8)	62*	4.3

C

C

B

B

A

A

## NOTES:

- PLEASE CONTACT IFP FOR AVAILABILITY
- BURST PRESSURE MEASUREMENT IS USING ASTM D1599.

DRAWN	5/11/2026
AG LABBAD	
CHECKED	5/11/2026
EA Flores	
APPROVED	5/11/2026
CD Morland	

## International Filter Products

7914 AJAY DRIVE  
Sun Valley, CA 91352

PHONE: 818-504-8115  
FAX: 818-841-2947  
email: sales@internationalfilterproducts.com

UNLESS OTHERWISE SPECIFIED  
DIMENSIONS ARE IN INCHES

DECIMALS FRACTIONS +/- 1/16  
X +/- .030 ANGLES +/- 1/2  
XX +/- .015 SURFACE ROUGHNESS 125  
XXX +/- .005

CONCENTRICITIES .010 (FIM)  
INTERNAL RADII .015~.030  
BREAK CORNERS .005~.015

TITLE			
Tube, X" ID x X" OD, Platinum Cured Silicone			
SIZE	ISOF NO	DWG NO	REV
A		SPT60L-XXX-X	-
SCALE	WEIGHT	SHEET 3 OF 3	
NA			

4

3

2

1